

## SK 14 Mn-O

DIN 8555 : MF 7-GF-200/450-KP

### DESCRIPTION

1

Rebuilding austenitic alloy for 14% Manganese alloy steel parts.

### SUITABLE FOR

2

Railway rails and crossovers.

### TYPICAL CHEMICAL ANALYSIS (WEIGHT %)

3

	C	Mn	Si	Cr	Ni	Fe
All Weld	0.90	14.0	0.5	0.50	0.50	Bal.

### TYPICAL MECHANICAL PROPERTIES

4

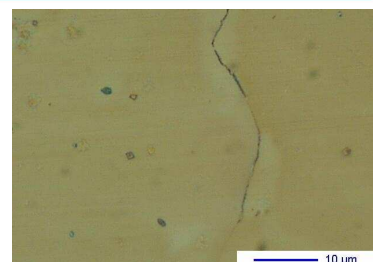
Hardness as welded

195 HB

### GENERAL CHARACTERISTICS

5

- Microstructure: Austenite
- Machinability: Good with carbide tipped tools
- Oxy-acetylene cutting: Cannot be flame cut
- Deposit thickness: As required
- Flux cored



### WELDING PARAMETERS & ECONOMICAL DATA

6

Diameter [mm]	Current [A]	Voltage [V]	Stick-Out	Article code	Packaging	Availability
1,6	180-200	26-30	35-40	29326	Spool 15 Kg	On request

The information about the products contained in the data sheets are based on intensive tests and careful investigations. However we can't assume any form of liability concerning the exactness of it. The information may be changed or updated without previous notice. The user is invited to test the product with regard to his own application and responsibility.