

SK 160-O

DIN 8555 : MF 10-GF-60-G

DESCRIPTION

1

Super Chromium carbides alloy giving higher toughness and excellent wear resistance on applications where multiple layers are required. The deposit will show stress relief cracks.

SUITABLE FOR

2

Pipe and elbows, wear plates, crusher mantles, coal pulverizing rollers.

TYPICAL CHEMICAL ANALYSIS (WEIGHT %)

3

	C	Mn	Si	Cr	Ni	Fe
All Weld	4.50	1.7	1.2	26.50	0.30	Bal.

TYPICAL MECHANICAL PROPERTIES

4

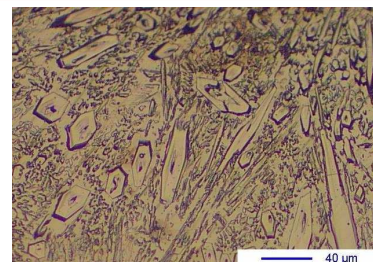
Hardness as welded

58 HRC

GENERAL CHARACTERISTICS

5

- Microstructure: Precipitation of Zr and Chromium carbides in an austenitic matrix
- Machinability: Grinding only
- Oxy-acetylene cutting: Cannot be flame cut
- Deposit thickness: Depends upon application and procedure used
- Metal cored



WELDING PARAMETERS & ECONOMICAL DATA

6

Diameter [mm]	Current [A]	Voltage [V]	Stick-Out	Article code	Packaging	Availability
2,4	250-350	26-30	35-40	45457	Coil 25 Kg	On request with minimal quantity
2,8	400-650	28-32	35-40	45458	Coil 25 Kg	On request with minimal quantity

The information about the products contained in the data sheets are based on intensive tests and careful investigations. However we can't assume any form of liability concerning the exactness of it. The information may be changed or updated without previous notice. The user is invited to test the product with regard to his own application and responsibility.