

## SK 162-O

DIN 8555 : MF 10-GF-65-G

### DESCRIPTION

1

High Chromium alloy designed for resisting high stress grinding abrasion with low impact. The deposit will show readily stress relief cracks.

### SUITABLE FOR

2

Wear plates.

### TYPICAL CHEMICAL ANALYSIS (WEIGHT %)

3

	C	Mn	Si	Cr	Fe
All Weld	5.40	0.2	1.3	27.00	Bal.

### TYPICAL MECHANICAL PROPERTIES

4

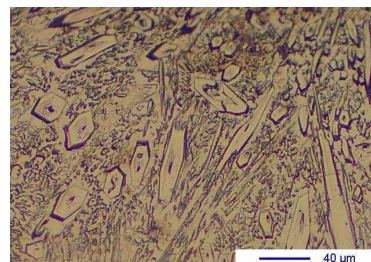
Hardness as welded

63 HRC

### GENERAL CHARACTERISTICS

5

- Microstructure: Primary carbides and M<sub>7</sub>C<sub>3</sub> eutectic carbides in an austenitic matrix
- Machinability: Grinding only
- Oxy-acetylene cutting: Cannot be flame cut
- Deposit thickness: 10 to 15 mm maximum in 3 layers
- Metal cored



The information about the products contained in the data sheets are based on intensive tests and careful investigations. However we can't assume any form of liability concerning the exactness of it. The information may be changed or updated without previous notice. The user is invited to test the product with regard to his own application and responsibility.

## SK 162-O

DIN 8555 : MF 10-GF-65-G

### WELDING PARAMETERS & ECONOMICAL DATA

6

Diameter [mm]	Current [A]	Voltage [V]	Stick- Out	Article code	Packaging	Availability
2,4	250-300	26-30	35-40	41855	Autopack 250 Kg	On request
2,8	300-500	26-30	35-40	29374	Spool 15 Kg	On request
2,8	300-500	26-30	35-40	29651	Autopack 250 Kg	Standard

The information about the products contained in the data sheets are based on intensive tests and careful investigations. However we can't assume any form of liability concerning the exactness of it. The information may be changed or updated without previous notice. The user is invited to test the product with regard to his own application and responsibility.