

SK 162-O SP

DIN 8555 : MF 10-GF-65-G

DESCRIPTION

1

High Chromium alloy designed for resisting high stress grinding abrasion with low impact. The deposit will show readily stress relief cracks. Special formulation suitable for very high welding parameters.

SUITABLE FOR

2

Wear plates.

TYPICAL CHEMICAL ANALYSIS (WEIGHT %)

3

	C	Mn	Si	Cr	Nb
All Weld	5.30	0.2	1.2	28.50	0.50

TYPICAL MECHANICAL PROPERTIES

4

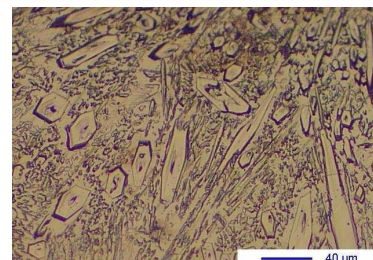
Hardness as welded

62 HRC

GENERAL CHARACTERISTICS

5

- Microstructure: Primary carbides and M7C3 eutectic carbides in an austenitic matrix
- Machinability: Grinding only
- Oxy-acetylene cutting: Cannot be flame cut.
- Deposit thickness: 10 to 15 mm maximum in 3 layers
- Metal cored



WELDING PARAMETERS & ECONOMICAL DATA

6

Diameter [mm]	Current [A]	Voltage [V]	Stick-Out	Article code	Packaging	Availability
2,8	450-650	26-34	35-40	29649	Autopack 250 Kg	On request with minimal quantity

The information about the products contained in the data sheets are based on intensive tests and careful investigations. However we can't assume any form of liability concerning the exactness of it. The information may be changed or updated without previous notice. The user is invited to test the product with regard to his own application and responsibility.