

## SK 200-O

DIN 8555 : MF 1-GF-250-P

### DESCRIPTION

1

Open-arc wire for joining mild and low alloy steels in the flat and horizontal positions.

### SUITABLE FOR

2

Profiles, reels, roll construction and reparation, crane wheel.

### TYPICAL CHEMICAL ANALYSIS (WEIGHT %)

3

	C	Mn	Si	Fe
All Weld	0.06	0.8	0.1	Bal.

### TYPICAL MECHANICAL PROPERTIES

4

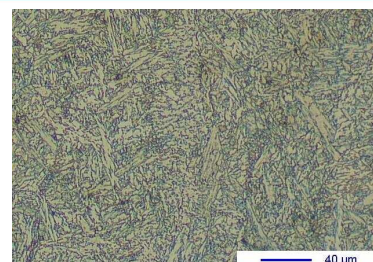
Hardness as welded

250 HB

### GENERAL CHARACTERISTICS

5

- Microstructure: Ferrite
- Machinability: Good
- Oxy-acetylene cutting: Possible
- Deposit thickness: No restriction
- Flux cored



### WELDING PARAMETERS & ECONOMICAL DATA

6

Diameter [mm]	Current [A]	Voltage [V]	Stick-Out	Article code	Packaging	Availability
1,6	180-200	26-30	35-40	46459	Spool 15 Kg	On request with minimal quantity
2,4	250-300	26-30	35-40	41412	Spool 15 Kg	On request with minimal quantity

The information about the products contained in the data sheets are based on intensive tests and careful investigations. However we can't assume any form of liability concerning the exactness of it. The information may be changed or updated without previous notice. The user is invited to test the product with regard to his own application and responsibility.