

## SK 218 TIC-O

DIN 8555 : MF 7-GF-40-KP

### DESCRIPTION

1

Special high Chromium-Manganese alloy enriched with titanium, designed to resist low stress abrasive wear and solid erosion wear with heavy impact.

### SUITABLE FOR

2

Applications requiring good behaviour when heavy impacts are combined with abrasive conditions.

### TYPICAL CHEMICAL ANALYSIS (WEIGHT %)

3

	C	Mn	Si	Cr	Fe	Ti
All Weld	1.30	11.0	0.5	2.90	Bal.	3.1

### TYPICAL MECHANICAL PROPERTIES

4

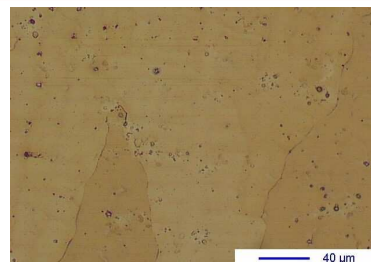
Hardness as welded

32 HRC

### GENERAL CHARACTERISTICS

5

- Microstructure: Dispersed Titanium and Chromium carbides in an austenitic matrix
- Machinability: Good with carbides tipped tools
- Oxy-acetylene cutting: Cannot be flame cut
- Deposit thickness: As required
- Flux cored



### WELDING PARAMETERS & ECONOMICAL DATA

6

Diameter [mm]	Current [A]	Voltage [V]	Stick-Out	Article code	Packaging	Availability
1,6	180-200	26-30	35-30	NA	Spool 15 Kg	On request with minimal quantity

The information about the products contained in the data sheets are based on intensive tests and careful investigations. However we can't assume any form of liability concerning the exactness of it. The information may be changed or updated without previous notice. The user is invited to test the product with regard to his own application and responsibility.