

SK 232-O

DIN 8555 : MF 1-GF-150-P

DESCRIPTION

1

Rebuilding alloy for Carbon steel parts.

SUITABLE FOR

2

Gears, axles, wheels...

TYPICAL CHEMICAL ANALYSIS (WEIGHT %)

3

	C	Mn	Si	Ti
All Weld	0.05	0.8	0.5	2.9

TYPICAL MECHANICAL PROPERTIES

4

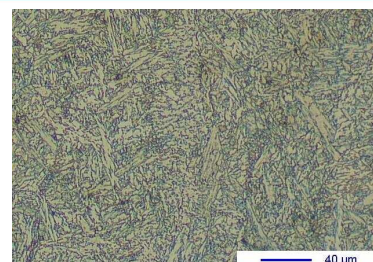
Hardness as welded

170 HB

GENERAL CHARACTERISTICS

5

- | | |
|-------------------------|----------------|
| ▪ Microstructure | Bainite |
| ▪ Machinability | Good |
| ▪ Oxy-acetylene cutting | Possible |
| ▪ Deposit thickness | No restriction |
| ▪ Flux cored | |



The information about the products contained in the data sheets are based on intensive tests and careful investigations. However we can't assume any form of liability concerning the exactness of it. The information may be changed or updated without previous notice. The user is invited to test the product with regard to his own application and responsibility.

SK 232-O

DIN 8555 : MF 1-GF-150-P

WELDING PARAMETERS & ECONOMICAL DATA

6

Diameter [mm]	Current [A]	Voltage [V]	Stick- Out	Article code	Packaging	Availability
2,0	200-250	26-30	35-40	29260	Spool 15 Kg	On request with minimal quantity
2,4	250-300	26-30	35-40	29261	Spool 15 Kg	On request with minimal quantity
2,8	300-350	26-30	35-40	29262	Spool 15 Kg	On request with minimal quantity
2,8	300-350	26-30	35-40	41476	Coil 25 Kg	On request with minimal quantity

The information about the products contained in the data sheets are based on intensive tests and careful investigations. However we can't assume any form of liability concerning the exactness of it. The information may be changed or updated without previous notice. The user is invited to test the product with regard to his own application and responsibility.