

SK 240TIC-O

DIN 8555 : MF 10-GF-55-G

DESCRIPTION

1

Special Chromium-titanium alloy designed to resist severe wear under both low stress and high stress conditions, with moderate to heavy impact. Deposits will present stress relief cracks.

SUITABLE FOR

2

Inter-particles crusher rollers (Polysius, KHD, Köppern), gyratory crusher mantles and bowls, dredging cutter and pump casing, augers, compactors, scraper blades, bucket teeth and lips, mineral sizers rotor teeth.

TYPICAL CHEMICAL ANALYSIS (WEIGHT %)

3

	C	Mn	Si	Cr	Fe	Ti
All Weld	4.90	1.5	0.2	8.30	Bal.	6.5

TYPICAL MECHANICAL PROPERTIES

4

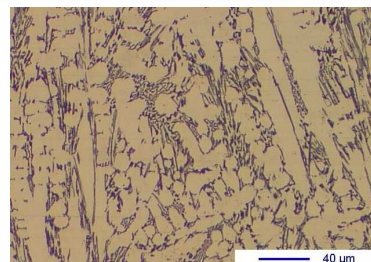
Hardness as welded

55 HRC

GENERAL CHARACTERISTICS

5

- Microstructure: Finely dispersed titanium carbides in an austenite carbide matrix
- Machinability: Grinding only
- Oxy-acetylene cutting: Cannot be flame cut.
- Deposit thickness: 8 to 10 mm in 2 to 3 layers
- Flux cored



The information about the products contained in the data sheets are based on intensive tests and careful investigations. However we can't assume any form of liability concerning the exactness of it. The information may be changed or updated without previous notice. The user is invited to test the product with regard to his own application and responsibility.

SK 240TIC-O

DIN 8555 : MF 10-GF-55-G

WELDING PARAMETERS & ECONOMICAL DATA

6

Diameter [mm]	Current [A]	Voltage [V]	Stick- Out	Article code	Packaging	Availability
1,6	180-200	26-30	35-40	29364	Spool 15 Kg	On request with minimal quantity
2,4	250-300	26-30	35-40	29366	Autopack 250 Kg	On request with minimal quantity
2,8	300-350	26-30	35-40	41833	Coil 25 Kg	On request with minimal quantity

The information about the products contained in the data sheets are based on intensive tests and careful investigations. However we can't assume any form of liability concerning the exactness of it. The information may be changed or updated without previous notice. The user is invited to test the product with regard to his own application and responsibility.