

## SK 300-O

DIN 8555 : MF 1-GF-300-P

### DESCRIPTION

1

Self shielded flux-cored wire to be used for the rebuilding of Carbon steel parts.

### SUITABLE FOR

2

Crawler tractor links, crane wheels, shafts, buffer layer for continuous casting rollers, mine car wheels.

### TYPICAL CHEMICAL ANALYSIS (WEIGHT %)

3

	C	Mn	Si	Cr	Mo	Fe	Ti
All Weld	0.10	1.0	0.6	0.50	0.4	Bal.	0.9

### TYPICAL MECHANICAL PROPERTIES

4

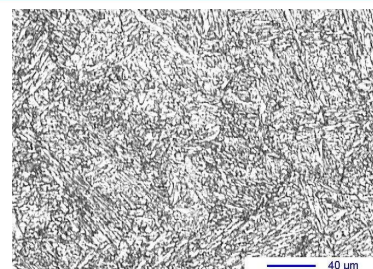
Hardness as welded

285 HB

### GENERAL CHARACTERISTICS

5

- Microstructure: Bainite
- Machinability: Good
- Oxy-acetylene cutting: Possible
- Deposit thickness: Depends upon application and procedure used
- Flux cored



### WELDING PARAMETERS & ECONOMICAL DATA

6

Diameter [mm]	Current [A]	Voltage [V]	Stick-Out	Article code	Packaging	Availability
1,6	180-200	26-30	35-40	41486	Spool 15 Kg	On request
2,4	250-300	26-30	35-40	45427	Spool 15 Kg	On request

The information about the products contained in the data sheets are based on intensive tests and careful investigations. However we can't assume any form of liability concerning the exactness of it. The information may be changed or updated without previous notice. The user is invited to test the product with regard to his own application and responsibility.