

## SK 350-O

DIN 8555 : MF 1-GF-350

### DESCRIPTION

1

Rebuilding and hardfacing alloy for Carbon steel parts.

### SUITABLE FOR

2

Medium hard build-ups.

### TYPICAL CHEMICAL ANALYSIS (WEIGHT %)

3

	C	Mn	Si	Cr	Fe	Ti
All Weld	0.15	1.3	0.1	2.50	Bal.	0.9

### TYPICAL MECHANICAL PROPERTIES

4

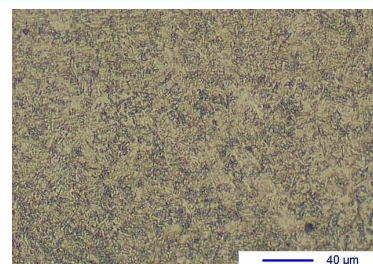
Hardness as welded

360 HB

### GENERAL CHARACTERISTICS

5

- Microstructure Bainite
- Machinability Good
- Oxy-acetylene cutting Cannot be flame cut
- Deposit thickness As required
- Flux cored



The information about the products contained in the data sheets are based on intensive tests and careful investigations. However we can't assume any form of liability concerning the exactness of it. The information may be changed or updated without previous notice. The user is invited to test the product with regard to his own application and responsibility.

## SK 350-O

DIN 8555 : MF 1-GF-350

### WELDING PARAMETERS & ECONOMICAL DATA

6

Diameter [mm]	Current [A]	Voltage [V]	Stick- Out	Article code	Packaging	Availability
1,6	180-200	26-30	35-40	29278	Spool 15 Kg	On request
2,4	250-300	26-30	35-40	29279	Spool 15 Kg	On request with minimal quantity
2,4	250-300	26-30	35-40	46515	Spool 25 Kg	On request
2,8	300-350	26-30	35-40	29280	Spool 15 Kg	On request

The information about the products contained in the data sheets are based on intensive tests and careful investigations. However we can't assume any form of liability concerning the exactness of it. The information may be changed or updated without previous notice. The user is invited to test the product with regard to his own application and responsibility.