

## SK 352-O

DIN 8555 : MF 10-GF-60-G

### DESCRIPTION

1

Open-arc wire depositing a medium Chromium carbide alloy designed to resist grinding abrasive wear with low impact. The deposits will readily show stress relief cracks.

### SUITABLE FOR

2

Palm oil expeller screws, groundnut oil expeller screws, cement conveyors screws, catalytic pipes, dredge pump impellers, dredge cutters, shovel bucket teeth.

### TYPICAL CHEMICAL ANALYSIS (WEIGHT %)

3

	C	Mn	Si	Cr	Fe
All Weld	4.50	1.2	0.7	18.00	Bal.

### TYPICAL MECHANICAL PROPERTIES

4

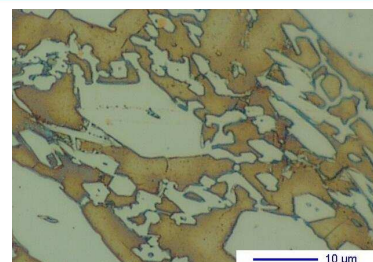
Hardness as welded

60 HRC

### GENERAL CHARACTERISTICS

5

- Microstructure: Primary carbides and eutectic carbides in an austenitic matrix
- Machinability: Grinding only
- Oxy-acetylene cutting: Cannot be flame cut.
- Deposit thickness: 2 to 3 layers maximum
- Metal cored



### WELDING PARAMETERS & ECONOMICAL DATA

6

Diameter [mm]	Current [A]	Voltage [V]	Stick-Out	Article code	Packaging	Availability
2,4	250-350	26-30	35-40	29329	Spool 15 Kg	On request with minimal quantity
2,4	250-350	26-30	35-40	29330	Autopack 250 Kg	On request with minimal quantity

The information about the products contained in the data sheets are based on intensive tests and careful investigations. However we can't assume any form of liability concerning the exactness of it. The information may be changed or updated without previous notice. The user is invited to test the product with regard to his own application and responsibility.