

## SK 400-O

DIN 8555 : MF 1-GF-40-P

### DESCRIPTION

1

Open-arc wire designed for rebuilding and hard surfacing of Carbon steel parts subjected to adhesive wear with impacts.

### SUITABLE FOR

2

Crawler tractor rollers and idlers, shafts, cylinders, mine car wheels, crane wheels.

### TYPICAL CHEMICAL ANALYSIS (WEIGHT %)

3

	C	Mn	Si	Cr	Fe
All Weld	0.11	0.6	0.6	2.40	Bal.

### TYPICAL MECHANICAL PROPERTIES

4

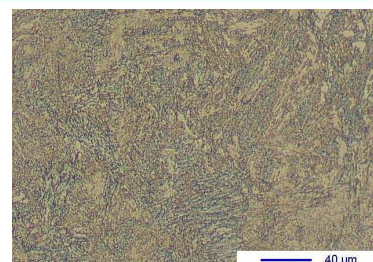
Hardness as welded

40 HRc

### GENERAL CHARACTERISTICS

5

- Microstructure: Bainite + Martensite
- Machinability: Good
- Oxy-acetylene cutting: Cannot be flame cut
- Deposit thickness: Depends upon application and procedure used
- Flux cored



### WELDING PARAMETERS & ECONOMICAL DATA

6

Diameter [mm]	Current [A]	Voltage [V]	Stick-Out	Article code	Packaging	Availability
1,6	180-200	26-30	35-40	24978	Spool 15 Kg	On request

The information about the products contained in the data sheets are based on intensive tests and careful investigations. However we can't assume any form of liability concerning the exactness of it. The information may be changed or updated without previous notice. The user is invited to test the product with regard to his own application and responsibility.