

SK 410C-O

DIN 8555 : MF 5-GF-45-C

DESCRIPTION

1

Alloy depositing a martensitic steel containing 13% Chromium, giving a very good resistance to friction wear and corrosion.

SUITABLE FOR

2

Continuous casting rollers, valve seats, impellers, steam turbine parts, tap-factory.

TYPICAL CHEMICAL ANALYSIS (WEIGHT %)

3

	C	Mn	Si	Cr	Fe
All Weld	0.08	0.6	0.2	13.50	Bal.

TYPICAL MECHANICAL PROPERTIES

4

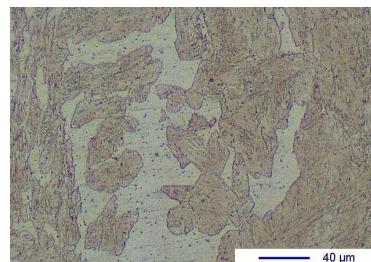
Hardness as welded

44 HRC

GENERAL CHARACTERISTICS

5

- | | |
|-------------------------|---|
| ▪ Machinability | Good with carbide tipped tools |
| ▪ Oxy-acetylene cutting | Cannot be flame cut |
| ▪ Deposit thickness | Depends upon application and procedure used |
| ▪ Flux cored | |



The information about the products contained in the data sheets are based on intensive tests and careful investigations. However we can't assume any form of liability concerning the exactness of it. The information may be changed or updated without previous notice. The user is invited to test the product with regard to his own application and responsibility.

SK 410C-O

DIN 8555 : MF 5-GF-45-C

WELDING PARAMETERS & ECONOMICAL DATA

6

Diameter [mm]	Current [A]	Voltage [V]	Stick- Out	Article code	Packaging	Availability
1,6	180-200	26-30	35-40	29327	Spool 15 Kg	On request
2,4	250-300	26-30	35-40	29328	Spool 15 Kg	On request with minimal quantity
2,8	300-350	26-30	35-40	51399	Coil 25 Kg	On request with minimal quantity

The information about the products contained in the data sheets are based on intensive tests and careful investigations. However we can't assume any form of liability concerning the exactness of it. The information may be changed or updated without previous notice. The user is invited to test the product with regard to his own application and responsibility.