

SK 430HC-O

DIN 8555 : MF 5-GF-400-C

DESCRIPTION

1

Alloy depositing a ferritic-martensitic steel containing 17% Chromium with a high Carbon content designed for rebuilding applications.

SUITABLE FOR

2

Rebuilding of tramways rails.

TYPICAL CHEMICAL ANALYSIS (WEIGHT %)

3

	C	Mn	Si	Cr	Fe
All Weld	0.20	0.9	0.3	16.50	Bal.

TYPICAL MECHANICAL PROPERTIES

4

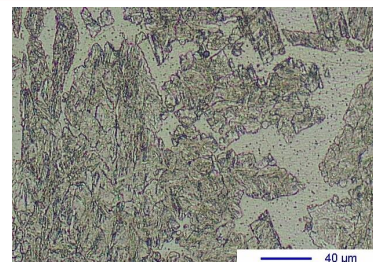
Hardness as welded

370 HB

GENERAL CHARACTERISTICS

5

- Microstructure: Martensitic matrix with ferrite and retained austenite
- Machinability: Good
- Oxy-acetylene cutting: Cannot be flame cut
- Deposit thickness: Depends upon application and procedure used
- Flux cored



WELDING PARAMETERS & ECONOMICAL DATA

6

Diameter [mm]	Current [A]	Voltage [V]	Stick-Out	Article code	Packaging	Availability
2,0	200-300	26-30	35-40	41708	Spool 15 Kg	On request with minimal quantity

The information about the products contained in the data sheets are based on intensive tests and careful investigations. However we can't assume any form of liability concerning the exactness of it. The information may be changed or updated without previous notice. The user is invited to test the product with regard to his own application and responsibility.