

## SK 460-O

DIN 8555 : MF 10-GF-60-G

### DESCRIPTION

1

High Chromium alloy designed to resist severe abrasive wear with moderate impacts. The deposits will readily stress relief crack.

### SUITABLE FOR

2

Auger flights, guides, pump housings.

### TYPICAL CHEMICAL ANALYSIS (WEIGHT %)

3

	C	Mn	Si	Cr	Mo	Fe	B
All Weld	3.70	0.4	1.1	32.00	0.5	Bal.	0.2

### TYPICAL MECHANICAL PROPERTIES

4

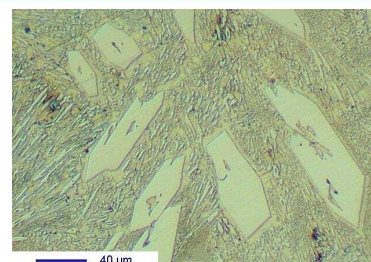
Hardness as welded

57 HRC

### GENERAL CHARACTERISTICS

5

- Microstructure: Primary carbides in an eutectic matrix
- Machinability: Grinding only
- Oxy-acetylene cutting: Cannot be flame cut
- Deposit thickness: 10 to 12 mm in 2 to 3 layers
- Metal cored



The information about the products contained in the data sheets are based on intensive tests and careful investigations. However we can't assume any form of liability concerning the exactness of it. The information may be changed or updated without previous notice. The user is invited to test the product with regard to his own application and responsibility.

## SK 460-O

DIN 8555 : MF 10-GF-60-G

### WELDING PARAMETERS & ECONOMICAL DATA

6

Diameter [mm]	Current [A]	Voltage [V]	Stick- Out	Article code	Packaging	Availability
1,2	120-150	26-30	35-40	NA	Spool 15 Kg	On request with minimal quantity
1,6	180-200	26-30	35-40	29392	Spool 15 Kg	On request
1,6	180-200	26-30	35-40	47629	Spool 20 Kg	On request with minimal quantity
2,0	200-250	26-30	35-40	47630	Spool 20 Kg	On request with minimal quantity
2,4	250-300	26-30	35-40	41910	Spool 15 Kg	On request with minimal quantity

The information about the products contained in the data sheets are based on intensive tests and careful investigations. However we can't assume any form of liability concerning the exactness of it. The information may be changed or updated without previous notice. The user is invited to test the product with regard to his own application and responsibility.