

## SK 600 TIC-O

DIN 8555 : MF 6-GF-60-GP

### DESCRIPTION

1

Martensitic Chromium-Titanium alloy designed to resist high stress abrasion with heavy impact. Deposits usually do not relieve cracks.

### SUITABLE FOR

2

Crusher rollers, crusher hammers, asphalt mixer blades, agricultural tools, shovel bucket teeth and lips, bulldozer blades, cane knives and shredders, bed knives in the wood pulp industry.

### TYPICAL CHEMICAL ANALYSIS (WEIGHT %)

3

	C	Mn	Si	Cr	Mo	Fe	Ti	Al
All Weld	1.60	0.9	0.3	6.10	1.5	Bal.	5.0	0.3

### TYPICAL MECHANICAL PROPERTIES

4

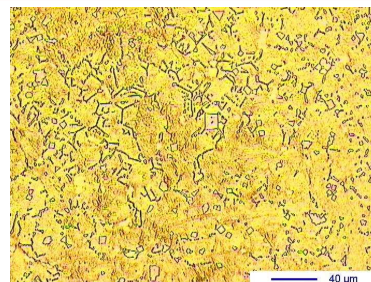
Hardness as welded

58 HRC

### GENERAL CHARACTERISTICS

5

- Microstructure: Finely dispersed titanium carbides in a hard Chromium martensitic matrix
- Machinability: Grinding only
- Oxy-acetylene cutting: Cannot be flame cut
- Deposit thickness: 15 to 18 mm in 5 to 6 layers
- Flux cored



The information about the products contained in the data sheets are based on intensive tests and careful investigations. However we can't assume any form of liability concerning the exactness of it. The information may be changed or updated without previous notice. The user is invited to test the product with regard to his own application and responsibility.

## SK 600 TIC-O

DIN 8555 : MF 6-GF-60-GP

### WELDING PARAMETERS & ECONOMICAL DATA

6

Diameter [mm]	Current [A]	Voltage [V]	Stick- Out	Article code	Packaging	Availability
1,2	120-150	26-30	35-40	41780	Spool 15 Kg	On request with minimal quantity
1,6	180-200	26-30	35-40	41794	Spool 15 Kg	On request
2,4	250-300	26-30	35-40	41810	Spool 15 Kg	On request

The information about the products contained in the data sheets are based on intensive tests and careful investigations. However we can't assume any form of liability concerning the exactness of it. The information may be changed or updated without previous notice. The user is invited to test the product with regard to his own application and responsibility.