

## SK 624-O

DIN 8555 : MF 7-GF-250-GKP

### DESCRIPTION

1

High Chromium-Manganese alloy enriched with Niobium, designed to resist abrasion and solid erosion wear combined with heavy impact.

### SUITABLE FOR

2

Crusher hammers, gyratory crusher mantles, crusher cylinders, automobile shredder hammers.

### TYPICAL CHEMICAL ANALYSIS (WEIGHT %)

3

	C	Mn	Si	Cr	Nb	Fe	Ti
All Weld	1.00	17.2	0.4	8.20	2.50	Bal.	0.1

### TYPICAL MECHANICAL PROPERTIES

4

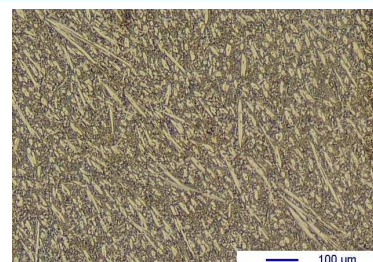
Hardness as welded

240 HB

### GENERAL CHARACTERISTICS

5

- Microstructure: Dispersed Niobium and Chromium carbides in an austenitic matrix
- Machinability: Good with metallic carbides or cubic Boron Nitride tipped tools
- Oxy-acetylene cutting: Cannot be flame cut
- Deposit thickness: Depends upon application and procedure used
- Flux cored



The information about the products contained in the data sheets are based on intensive tests and careful investigations. However we can't assume any form of liability concerning the exactness of it. The information may be changed or updated without previous notice. The user is invited to test the product with regard to his own application and responsibility.

## SK 624-O

DIN 8555 : MF 7-GF-250-GKP

### WELDING PARAMETERS & ECONOMICAL DATA

6

Diameter [mm]	Current [A]	Voltage [V]	Stick- Out	Article code	Packaging	Availability
1,6	180-200	26-30	35-40	29322	Spool 15 Kg	On request
2,0	200-250	26-30	35-40	29323	Spool 15 Kg	On request with minimal quantity
2,4	250-300	26-30	35-40	29324	Spool 15 Kg	On request with minimal quantity
2,8	300-350	26-30	35-40	29325	Spool 15 Kg	On request with minimal quantity
2,8	300-350	26-30	35-40	40422	Coil 25 Kg	Standard

The information about the products contained in the data sheets are based on intensive tests and careful investigations. However we can't assume any form of liability concerning the exactness of it. The information may be changed or updated without previous notice. The user is invited to test the product with regard to his own application and responsibility.