

SK 785-O

DIN 8555 : MF 10-GF-60-G

DESCRIPTION

1

High Chromium alloy designed for resisting high stress grinding abrasive wear without impact at service temperature up to 400°C.

SUITABLE FOR

2

Palm oil extruders, shovel bucket teeth, coal screw conveyors, wear plates, plowshares.

TYPICAL CHEMICAL ANALYSIS (WEIGHT %)

3

	C	Mn	Si	Cr	Fe
All Weld	5.10	1.6	1.0	31.00	Bal.

TYPICAL MECHANICAL PROPERTIES

4

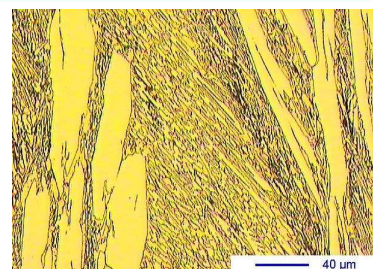
Hardness as welded

61 HRC

GENERAL CHARACTERISTICS

5

- Microstructure: Primary carbides and eutectic carbides in an austenitic matrix
- Machinability: Grinding only
- Oxy-acetylene cutting: Cannot be flame cut
- Deposit thickness: 8 to 10 mm in 2 to 3 layers
- Metal cored



The information about the products contained in the data sheets are based on intensive tests and careful investigations. However we can't assume any form of liability concerning the exactness of it. The information may be changed or updated without previous notice. The user is invited to test the product with regard to his own application and responsibility.

SK 785-O

DIN 8555 : MF 10-GF-60-G

WELDING PARAMETERS & ECONOMICAL DATA

6

Diameter [mm]	Current [A]	Voltage [V]	Stick- Out	Article code	Packaging	Availability
1,6	180-200	26-30	35-40	29434	Spool 15 Kg	On request
2,0	200-250	26-30	35-40	NA	Spool 15 Kg	On request with minimal quantity
2,4	250-300	26-30	35-40	29435	Spool 15 Kg	On request with minimal quantity
2,8	300-350	26-30	35-40	41233	Coil 25 Kg	On request with minimal quantity

The information about the products contained in the data sheets are based on intensive tests and careful investigations. However we can't assume any form of liability concerning the exactness of it. The information may be changed or updated without previous notice. The user is invited to test the product with regard to his own application and responsibility.