

SK 795-O

DIN 8555 : MF 6-GF-40-G

DESCRIPTION

1

Medium carbide alloy designed primarily for heavy build-up using automatic processes. The deposits will readily stress relief crack.

SUITABLE FOR

2

Dredge pump shells, gyratory crusher mantles and bowls.

TYPICAL CHEMICAL ANALYSIS (WEIGHT %)

3

	C	Mn	Si	Cr	Mo	Fe
All Weld	1.90	1.5	1.8	9.00	1.4	Bal.

TYPICAL MECHANICAL PROPERTIES

4

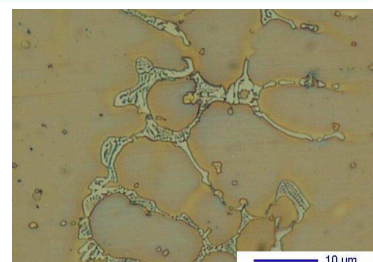
Hardness as welded

40 HRC

GENERAL CHARACTERISTICS

5

- Microstructure: Interdendritic eutectic carbides of the type, perlite, austenite partially transformed in bainite, few martensite
- Machinability: Grinding only
- Oxy-acetylene cutting: Cannot be flame cut
- Deposit thickness: 15 to 20 mm
- Metal cored



The information about the products contained in the data sheets are based on intensive tests and careful investigations. However we can't assume any form of liability concerning the exactness of it. The information may be changed or updated without previous notice. The user is invited to test the product with regard to his own application and responsibility.

WELDING PARAMETERS & ECONOMICAL DATA

6

Diameter [mm]	Current [A]	Voltage [V]	Stick- Out	Article code	Packaging	Availability
1,2	120-150	26-30	35-40	NA	Spool 15 Kg	On request with minimal quantity
1,6	150-250	26-30	35-40	29316	Spool 15 Kg	On request with minimal quantity
2,0	200-300	26-30	35-40	29317	Spool 15 Kg	On request with minimal quantity
2,0	200-300	26-30	35-40	41668	Coil 25 Kg	On request with minimal quantity
2,4	250-300	26-30	35-40	31721	Coil 25 Kg	On request with minimal quantity
2,8	300-350	26-30	35-40	41417	Autopack 150 Kg	On request with minimal quantity

The information about the products contained in the data sheets are based on intensive tests and careful investigations. However we can't assume any form of liability concerning the exactness of it. The information may be changed or updated without previous notice. The user is invited to test the product with regard to his own application and responsibility.