

SK A 40-O

DIN 8555 : MF 10-GF-60-G

DESCRIPTION

1

Chromium-Niobium alloy designed to resist gouging abrasive wear with moderate impact. The deposits will readily show stress relief cracks.

SUITABLE FOR

2

Gyratory crusher mantles and bowls, crusher hammers, crusher cylinders, ripper teeth.

TYPICAL CHEMICAL ANALYSIS (WEIGHT %)

3

	C	Mn	Si	Cr	Nb	Fe
All Weld	4.40	0.3	1.5	20.50	5.80	Bal.

TYPICAL MECHANICAL PROPERTIES

4

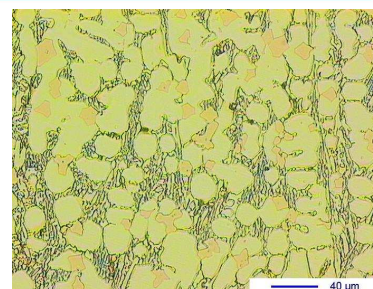
Hardness as welded

58 HRC

GENERAL CHARACTERISTICS

5

- Microstructure: Primary carbides and M₇C₃ eutectic carbides in an austenitic matrix
- Machinability: Grinding only
- Oxy-acetylene cutting: Cannot be flame cut
- Deposit thickness: 10 to 12 mm in 2 to 3 layers
- Metal cored



The information about the products contained in the data sheets are based on intensive tests and careful investigations. However we can't assume any form of liability concerning the exactness of it. The information may be changed or updated without previous notice. The user is invited to test the product with regard to his own application and responsibility.

SK A 40-O

DIN 8555 : MF 10-GF-60-G

WELDING PARAMETERS & ECONOMICAL DATA

6

Diameter [mm]	Current [A]	Voltage [V]	Stick- Out	Article code	Packaging	Availability
1,6	180-200	26-30	35-40	29394	Spool 15 Kg	On request with minimal quantity
2,4	250-300	26-30	35-40	29395	Spool 15 Kg	On request with minimal quantity
2,8	300-350	26-30	35-40	29396	Spool 15 Kg	On request with minimal quantity
2,8	300-350	26-30	35-40	41912	Coil 25 Kg	On request with minimal quantity
2,8	300-350	26-30	35-40	29397	Autopack 250 Kg	On request with minimal quantity

The information about the products contained in the data sheets are based on intensive tests and careful investigations. However we can't assume any form of liability concerning the exactness of it. The information may be changed or updated without previous notice. The user is invited to test the product with regard to his own application and responsibility.