

## SK A 41-O

DIN 8555 : MF 10-GF-60-G

### DESCRIPTION

1

Chromium-Niobium alloy designed to resist gouging abrasive wear with moderate impact.

### SUITABLE FOR

2

Gyratory crusher mantles and bowls, crusher hammers, crusher cylinders, ripper teeth.

### TYPICAL CHEMICAL ANALYSIS (WEIGHT %)

3

	C	Mn	Si	Cr	Nb	Fe
All Weld	5.60	0.2	0.8	28.50	2.15	Bal.

### TYPICAL MECHANICAL PROPERTIES

4

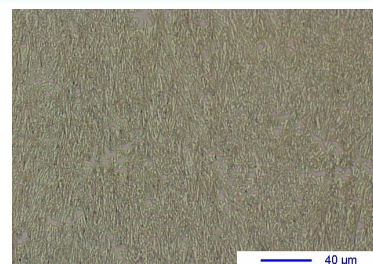
Hardness as welded

60 HRC

### GENERAL CHARACTERISTICS

5

- Microstructure: Primary carbides and M7C3 eutectic carbides and nodular Niobium carbides in an austenitic matrix.
- Machinability: Grinding only
- Oxy-acetylene cutting: Cannot be flame cut
- Deposit thickness: 2 to 3 layers maximum
- Metal cored



### WELDING PARAMETERS & ECONOMICAL DATA

6

Diameter [mm]	Current [A]	Voltage [V]	Stick-Out	Article code	Packaging	Availability
2,8	300-350	27-30	35-40	NA	Coil 25 Kg	On request with minimal quantity

The information about the products contained in the data sheets are based on intensive tests and careful investigations. However we can't assume any form of liability concerning the exactness of it. The information may be changed or updated without previous notice. The user is invited to test the product with regard to his own application and responsibility.