

## SK A 42-O

DIN 8555 : MF 10-GF-60-G

### DESCRIPTION

1

Chromium Molybdenum high Carbon alloyed flux cored wire with Nickel addition designed to resist gouging abrasive wear with moderate impact.

### SUITABLE FOR

2

Manufacturing of wear plates.

### TYPICAL CHEMICAL ANALYSIS (WEIGHT %)

3

	C	Mn	Si	Cr	Ni	Mo	Fe
All Weld	5.00	0.2	0.3	27.50	2.00	2.8	Bal.

### TYPICAL MECHANICAL PROPERTIES

4

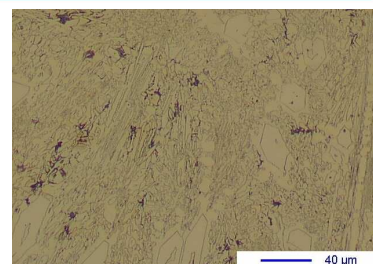
Hardness as welded

60 HRC

### GENERAL CHARACTERISTICS

5

- Microstructure: primary carbides, eutectic carbides and Mo secondary
- Machinability: Grinding only
- Oxy-acetylene cutting: Cannot be flame cut
- Deposit thickness: 2 to 3 layers
- Metal cored



### WELDING PARAMETERS & ECONOMICAL DATA

6

Diameter [mm]	Current [A]	Voltage [V]	Stick-Out	Article code	Packaging	Availability
2,4	250-300	27-30	35-40	NA	Spool 15 Kg	On request with minimal quantity
2,8	300-350	27-30	35-40	NA	Spool 15 Kg	On request with minimal quantity

The information about the products contained in the data sheets are based on intensive tests and careful investigations. However we can't assume any form of liability concerning the exactness of it. The information may be changed or updated without previous notice. The user is invited to test the product with regard to his own application and responsibility.