

## SK BU-C1

DIN 8555 : MF 1-GF-250-P

### DESCRIPTION

1

Open-arc wire for joining mild and low alloy steels in the flat and horizontal positions.

### SUITABLE FOR

2

Profiles, reels, roll construction and reparation, crane wheel.

### TYPICAL CHEMICAL ANALYSIS (WEIGHT %)

3

	C	Mn	Si	Fe
All Weld	0.05	0.9	0.1	Bal.

### TYPICAL MECHANICAL PROPERTIES

4

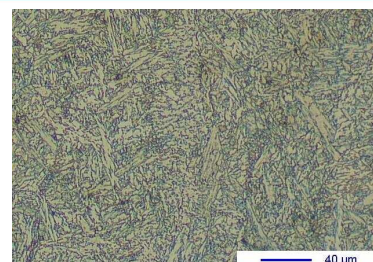
Hardness as welded

250 HB

### GENERAL CHARACTERISTICS

5

- Microstructure Ferrite
- Machinability Good
- Oxy-acetylene cutting Possible
- Flux cored



The information about the products contained in the data sheets are based on intensive tests and careful investigations. However we can't assume any form of liability concerning the exactness of it. The information may be changed or updated without previous notice. The user is invited to test the product with regard to his own application and responsibility.

## SK BU-C1

DIN 8555 : MF 1-GF-250-P

### WELDING PARAMETERS & ECONOMICAL DATA

6

Diameter [mm]	Current [A]	Voltage [V]	Stick-Out	Article code	Packaging	Availability
1,2	120-150	26-30	35-40	29253	Spool 15 Kg	Standard
1,6	180-200	26-30	35-40	29254	Spool 15 Kg	Standard
2,0	200-250	26-30	35-40	29255	Spool 15 Kg	On request
2,4	250-300	26-30	35-40	29256	Spool 15 Kg	On request
2,8	300-350	26-30	35-40	29257	Spool 15 Kg	On request with minimal quantity
2,8	300-350	26-30	35-40	40420	Coil 25 Kg	On request
2,8	300-350	26-30	35-40	41431	Autopack 150 Kg	On request with minimal quantity

The information about the products contained in the data sheets are based on intensive tests and careful investigations. However we can't assume any form of liability concerning the exactness of it. The information may be changed or updated without previous notice. The user is invited to test the product with regard to his own application and responsibility.