

SK BU-O

DIN 8555 : MF 1-GF-300-P

DESCRIPTION

1

Rebuilding alloy for Carbon steel parts.

SUITABLE FOR

2

Crawler tractor links, crane wheels, shafts, buffer layer for continuous casting rollers, mine car wheels.

TYPICAL CHEMICAL ANALYSIS (WEIGHT %)

3

	C	Mn	Si	Cr	Mo	Fe
All Weld	0.10	1.0	0.6	0.50	0.4	Bal.

TYPICAL MECHANICAL PROPERTIES

4

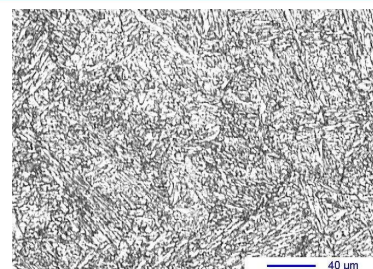
Hardness as welded

285 HB

GENERAL CHARACTERISTICS

5

- Microstructure Bainite
- Machinability Good
- Oxy-acetylene cutting Possible
- Deposit thickness Depends upon application and procedure used
- Flux cored



The information about the products contained in the data sheets are based on intensive tests and careful investigations. However we can't assume any form of liability concerning the exactness of it. The information may be changed or updated without previous notice. The user is invited to test the product with regard to his own application and responsibility.

SK BU-O

DIN 8555 : MF 1-GF-300-P

WELDING PARAMETERS & ECONOMICAL DATA

6

Diameter [mm]	Current [A]	Voltage [V]	Stick-Out	Article code	Packaging	Availability
1,2	120-150	26-30	35-40	29266	Spool 15 Kg	On request
1,6	180-200	26-30	35-40	29267	Spool 15 Kg	Standard
2,0	200-250	26-30	35-40	29268	Spool 15 Kg	On request with minimal quantity
2,4	250-300	26-30	35-40	29270	Spool 15 Kg	Standard
2,4	250-300	26-30	35-40	29271	Autopack 250 Kg	On request with minimal quantity
2,8	300-350	26-30	35-40	29272	Spool 15 Kg	On request
2,8	300-350	26-30	35-40	31718	Coil 25 Kg	On request

The information about the products contained in the data sheets are based on intensive tests and careful investigations. However we can't assume any form of liability concerning the exactness of it. The information may be changed or updated without previous notice. The user is invited to test the product with regard to his own application and responsibility.