

## SK CrMo21Ni-O

DIN 8555 : MF 1-GF-350-GP

### DESCRIPTION

1

Rebuilding alloy for Carbon steel parts.

### SUITABLE FOR

2

Crawler tractor links, crane wheels, shafts, buffer layer for continuous casting rollers, mine car wheels.

### TYPICAL CHEMICAL ANALYSIS (WEIGHT %)

3

	C	Mn	Si	Cr	Ni	Mo	Fe	Ti
All Weld	0.08	1.0	0.7	2.30	2.00	1.0	Bal.	0.9

### TYPICAL MECHANICAL PROPERTIES

4

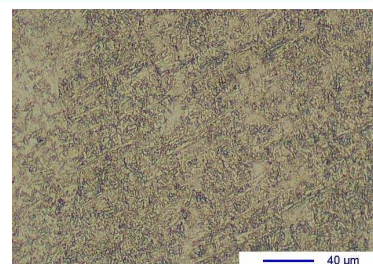
Hardness as welded

40 HRC

### GENERAL CHARACTERISTICS

5

- Microstructure      Bainite
- Machinability        Good
- Oxy-acetylene cutting    Difficult
- Deposit thickness      No restriction
- Flux cored



The information about the products contained in the data sheets are based on intensive tests and careful investigations. However we can't assume any form of liability concerning the exactness of it. The information may be changed or updated without previous notice. The user is invited to test the product with regard to his own application and responsibility.

## SK CrMo21Ni-O

DIN 8555 : MF 1-GF-350-GP

### WELDING PARAMETERS & ECONOMICAL DATA

6

Diameter [mm]	Current [A]	Voltage [V]	Stick- Out	Article code	Packaging	Availability
1,6	180-200	26-30	35-40	29274	Spool 15 Kg	On request with minimal quantity
2,4	250-300	26-30	35-40	29275	Spool 15 Kg	On request with minimal quantity
2,8	300-350	26-30	35-40	29276	Spool 15 Kg	On request with minimal quantity

The information about the products contained in the data sheets are based on intensive tests and careful investigations. However we can't assume any form of liability concerning the exactness of it. The information may be changed or updated without previous notice. The user is invited to test the product with regard to his own application and responsibility.