

## SK SOUDOCORE S8-O

EN 758 : T 42 Z W N 4  
ASME IIC SFA 5.20-01 : E 70 T-4

### DESCRIPTION

1

Open arc flux cored wire for the joining and surfacing in single and/or multi-layer of un- and low alloyed steels. Developed for the maintenance of slag ladles in steelmaking processes. High deposition rate for applications in flat positions. Highly crack resistant and easy slag removal properties. Also applicable on irregular prepared bevels and gaps between plates to be joined.

### SUITABLE FOR

2

Unalloyed construction steels EN 10025 S185-S355J2G3, (St.33-St.52.3)  
Boiler plates EN 10028-2 P235GH-P295GH (H1, H11, 17Mn4, 19Mn5)  
Cast steels DIN 1681 GS-38, GS-70

### TYPICAL CHEMICAL ANALYSIS (WEIGHT %)

3

	C	Mn	Si	Fe	Al
All Weld	0.28	0.4	0.2	Bal.	1.5

### TYPICAL MECHANICAL PROPERTIES

4

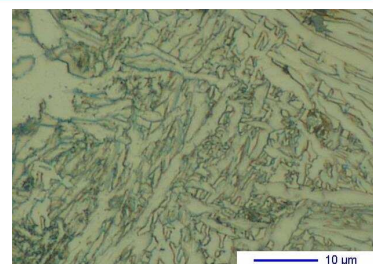
Hardness as welded

190 HB

### GENERAL CHARACTERISTICS

5

- Microstructure: Ferrite
- Machinability: Good
- Oxy-acetylene cutting: Possible
- Deposit thickness: No restriction
- Shielding gas: Not applicable
- Flux cored



### WELDING PARAMETERS & ECONOMICAL DATA

6

Diameter [mm]	Current [A]	Voltage [V]	Stick-Out	Article code	Packaging	Availability
2,0	200-550	26-35	25-50	29068	Spool 15 Kg	On request with minimal quantity

The information about the products contained in the data sheets are based on intensive tests and careful investigations. However we can't assume any form of liability concerning the exactness of it. The information may be changed or updated without previous notice. The user is invited to test the product with regard to his own application and responsibility.