

## SK STELKAY 6-O

DIN 8555 : MF 20-GF-40-CTZ  
ASME IIC SFA 5.21 : ERC CoCr-A

### DESCRIPTION

1

Cobalt base alloy , open arc version, providing excellent resistance to metal-to-metal wear, oxidation, thermal cycling and impact in corrosive environments at high temperature.

### SUITABLE FOR

2

Valves, valve seats in motor vehicles, hot shear blades, extruder screws, clack valves and seats, dies, punches.

### TYPICAL CHEMICAL ANALYSIS (WEIGHT %)

3

	C	Mn	Si	Cr	W	Fe	Co
All Weld	0.85	0.8	1.2	27.50	4.0	3.0	Bal.

### TYPICAL MECHANICAL PROPERTIES

4

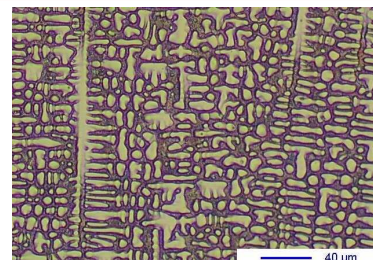
Hardness as welded

40 HRC

### GENERAL CHARACTERISTICS

5

- Microstructure: Chromium and Tungsten carbides in an austenitic matrix
- Machinability: Good with metallic carbide tipped tools
- Oxy-acetylene cutting: Cannot be flame cut
- Deposit thickness: Depends upon application and procedure used
- Flux cored



### WELDING PARAMETERS & ECONOMICAL DATA

6

Diameter [mm]	Current [A]	Voltage [V]	Stick-Out	Article code	Packaging	Availability
1,6	150-250	20-31	35-40	41400	Spool 15 Kg	On request with minimal quantity
2,4	250-400	20-31	35-40	41402	Spool 15 Kg	On request with minimal quantity

The information about the products contained in the data sheets are based on intensive tests and careful investigations. However we can't assume any form of liability concerning the exactness of it. The information may be changed or updated without previous notice. The user is invited to test the product with regard to his own application and responsibility.