

SK TAC-O

DIN 8555 : MF 23-GF-200-CKZ

DESCRIPTION

1

Nickel base alloy of the "HASTELLOY C" type, designed for hard surfacing parts subject to oxidation, corrosion and mechanical stresses at high temperature (1.100 °C).

SUITABLE FOR

2

Hot shear blades, pits points, mill guides, drawing guides, hot extrusion dies, blast furnace bell seats.

TYPICAL CHEMICAL ANALYSIS (WEIGHT %)

3

	C	Mn	Si	Cr	Ni	Mo	W	Fe	Ti
All Weld	0.02	0.3	0.5	16.50	Bal.	17.0	4.2	4.0	0.1

TYPICAL MECHANICAL PROPERTIES

4

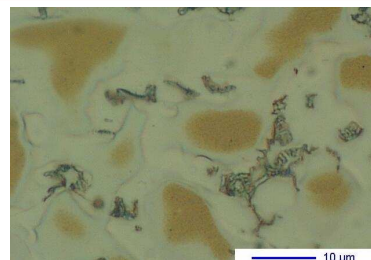
Hardness as welded

225 HB

GENERAL CHARACTERISTICS

5

- | | |
|-------------------------|---|
| ▪ Microstructure | Solid solution of the austenite type |
| ▪ Machinability | Good |
| ▪ Oxy-acetylene cutting | Cannot be flame cut |
| ▪ Deposit thickness | Depends upon application and procedure used |
| ▪ Flux cored | |



The information about the products contained in the data sheets are based on intensive tests and careful investigations. However we can't assume any form of liability concerning the exactness of it. The information may be changed or updated without previous notice. The user is invited to test the product with regard to his own application and responsibility.

SK TAC-O

DIN 8555 : MF 23-GF-200-CKZ

WELDING PARAMETERS & ECONOMICAL DATA

6

Diameter [mm]	Current [A]	Voltage [V]	Stick- Out	Article code	Packaging	Availability
1,6	180-200	26-30	35-40	63979	Spool 15 Kg	On request with minimal quantity
2,4	250-300	26-30	35-40	29470	Spool 15 Kg	On request with minimal quantity
2,8	300-350	26-30	35-40	41398	Coil 25 Kg	On request with minimal quantity

The information about the products contained in the data sheets are based on intensive tests and careful investigations. However we can't assume any form of liability concerning the exactness of it. The information may be changed or updated without previous notice. The user is invited to test the product with regard to his own application and responsibility.