

SK TO28Cr45

DIN 8555 : MF 10-GF-55-G

DESCRIPTION

1

Open-arc metal cored wire designed to deposit a metal resistant to high stress grinding abrasion with low impact. The deposits will readily stress relief check crack.

SUITABLE FOR

2

Palm oil expeller screws, groundnut oil expeller screws, cement conveyors screws, catalytic pipes, dredge pump impellers, dredge cutters, shovel bucket teeth.

TYPICAL CHEMICAL ANALYSIS (WEIGHT %)

3

	C	Mn	Si	Cr	Mo	Fe
All Weld	4.30	3.5	1.0	27.00	4.4	Bal.

TYPICAL MECHANICAL PROPERTIES

4

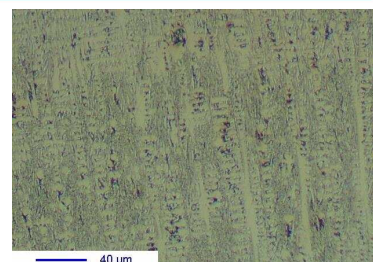
Hardness as welded

55 HRc

GENERAL CHARACTERISTICS

5

- Microstructure: Eutectic carbides in an austenitic matrix
- Machinability: Grinding only
- Oxy-acetylene cutting: Cannot be flame cut
- Deposit thickness: 8 to 10 mm maximum in 2 to 3 layers
- Metal cored



WELDING PARAMETERS & ECONOMICAL DATA

6

Diameter [mm]	Current [A]	Voltage [V]	Stick-Out	Article code	Packaging	Availability
2,8	300-500	26-30	35-40	50922	Autopack 250 Kg	On request with minimal quantity

The information about the products contained in the data sheets are based on intensive tests and careful investigations. However we can't assume any form of liability concerning the exactness of it. The information may be changed or updated without previous notice. The user is invited to test the product with regard to his own application and responsibility.