

## SK TO35Cr30

DIN 8555 : MF 10-GF-55-G

### DESCRIPTION

1

High Chromium alloy designed to resist against gouging abrasive wear with moderate impacts. The deposits will readily stress relief check crack.

### SUITABLE FOR

2

Gyratory crusher mantles and spheres, crusher hammers, crusher cylinders, ripper teeth.

### TYPICAL CHEMICAL ANALYSIS (WEIGHT %)

3

	C	Mn	Si	Cr	V	Fe
All Weld	3.80	0.6	1.3	31.00	0	Bal.

### TYPICAL MECHANICAL PROPERTIES

4

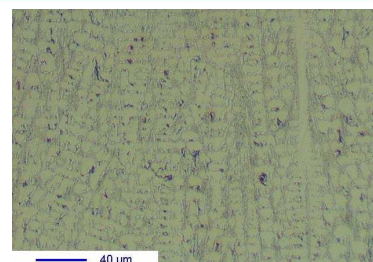
Hardness as welded

55 HRC

### GENERAL CHARACTERISTICS

5

- Microstructure: Eutectic carbides in an austenitic matrix
- Machinability: Grinding only
- Oxy-acetylene cutting: Cannot be flame cut
- Deposit thickness: 10 to 12 mm in 2 to 3 layers
- Metal cored



### WELDING PARAMETERS & ECONOMICAL DATA

6

Diameter [mm]	Current [A]	Voltage [V]	Stick-Out	Article code	Packaging	Availability
2,4	250-300	26-30	35-40	41445	Autopack 250 Kg	On request with minimal quantity
2,8	300-500	26-30	35-40	41401	Autopack 250 Kg	On request with minimal quantity

The information about the products contained in the data sheets are based on intensive tests and careful investigations. However we can't assume any form of liability concerning the exactness of it. The information may be changed or updated without previous notice. The user is invited to test the product with regard to his own application and responsibility.